

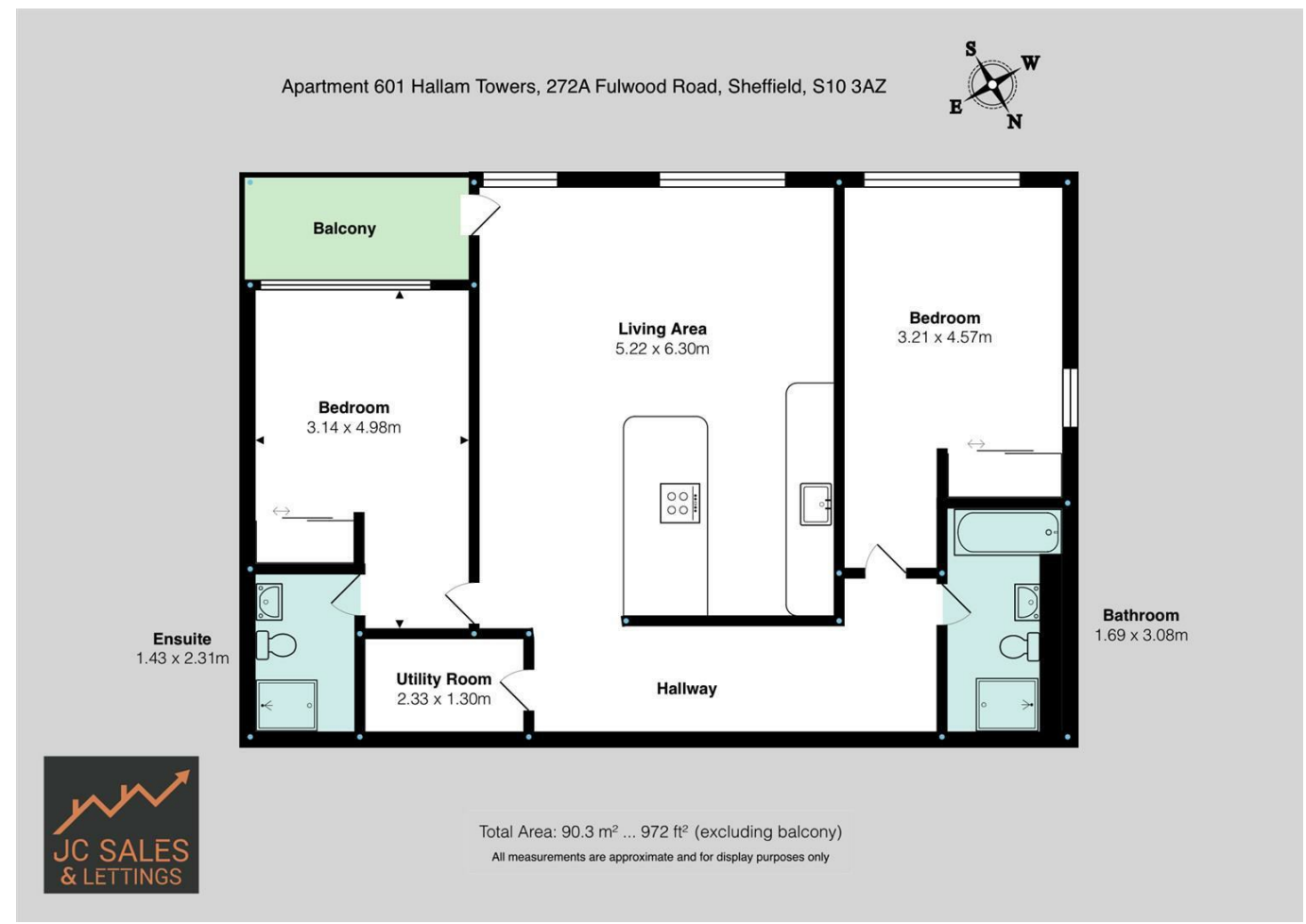
Viewings
Viewings by arrangement only.
Call 0114 483 0038 to make an appointment.

Vendors Comments
Add text here

Energy Efficiency Rating		
	Current	Potential
Very energy efficient - lower running costs		
(92 plus) A		
(81-91) B	83	83
(69-80) C		
(55-68) D		
(39-54) E		
(21-38) F		
(1-20) G		
Not energy efficient - higher running costs		
England & Wales	EU Directive 2002/91/EC	



Tel: 0114 483 0038
E-mail: sales@jc-salesandlettings.com
Website: www.jc-salesandlettings.com



Apartment 601 Hallam Towers, 272a Fulwood Road, Sheffield, S10 3AZ
£1,850 Per month

- Balcony and incredible far reaching views
- Available furnished
- Full use of extensive on-site amenities
- Ideal for a single occupant, professional couple or small family
- EPC Grade B
- Available for immediate occupation
- Stunning, sixth floor apartment
- On-site fitness suite and swimming pool
- Early viewing is highly recommended

Apartment 601 Hallam Towers, 272a Fulwood Road, Sheffield S10 2A7

AVAILABLE FOR IMMEDIATE OCCUPATION is this STUNNING, sixth floor apartment with a BALCONY, which is available FURNISHED.

This two DOUBLE bedroom, two bathroom apartment benefits from INCREDIBLE, FAR REACHING VIEWS over Sheffield and has full use of the EXTENSIVE ON-SITE AMENITIES, which includes a state of the art FITNESS SUITE and SWIMMING POOL.

In brief the accommodation comprises: entrance hallway, utility room, large open plan living room / kitchen, two double bedrooms one with en-suite and a family bathroom / WC. One allocated car parking space.

An internal inspection is highly recommended to appreciate the size and standard of accommodation on offer!

EPC Grade B.

 2  2  1  B

Council Tax Band: C

